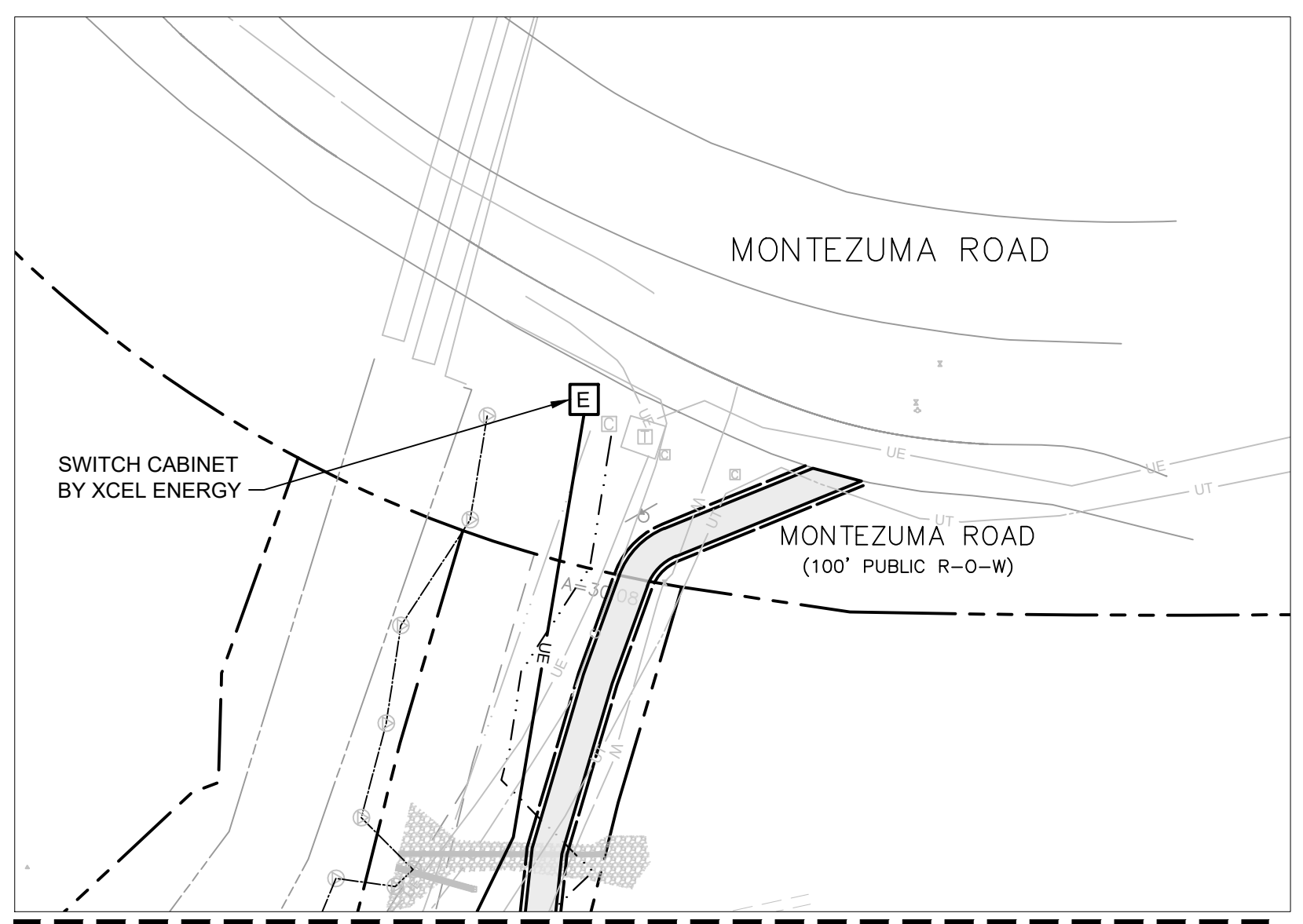
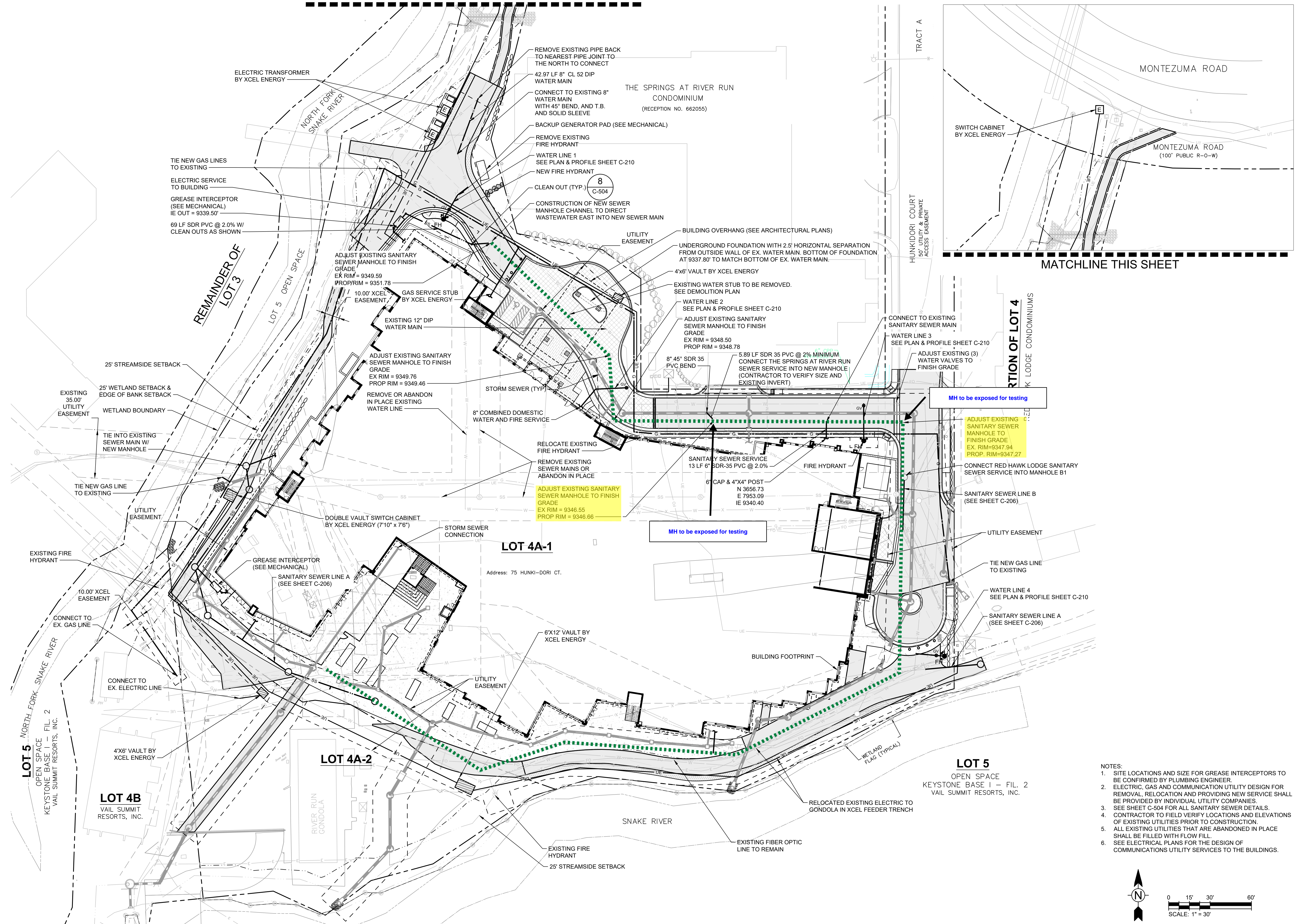


6/19/2020 1:55:07 PM - O:\PROJECTS\BRECKENRIDGE\23526\200-23526-20001\CAD\SHETSHEETFILES\C106 COMPOSITE UTILITY PLAN DWG - PEOPLES CHARLEY

MATCHLINE THIS SHEET



**OZ ARCHITECTURE**  
 3003 Larimer Street  
 Denver, Colorado 80205  
 phone 303.861.5704  
 www.ozarch.com

**TETRA TECH**  
 130 SKI HILL ROAD SUITE 140  
 BRECKENRIDGE, COLORADO 80424  
 PHONE: (970)453-6394

**ONE RIVER RUN**  
**75 HUNKI DORI CT.**  
**KEYSTONE, CO 80435**

PROJ. NO. 23526-20001  
 DRAWN: KGS  
 CHECKED: CDD  
 APPROVED: CDD  
 DATE: 2020/06/25

© OZ ARCHITECTURE

ONE RIVER RUN  
 ISSUED FOR:  
 ISSUE FOR PERMIT/ ISSUE  
 FOR CONSTRUCTION

SHEET TITLE:  
 COMPOSITE UTILITY PLAN

SCALE: 1" = 30'  
 SHEET NUMBER  
**C-109**

- NOTES:
1. SITE LOCATIONS AND SIZE FOR GREASE INTERCEPTORS TO BE CONFIRMED BY PLUMBING ENGINEER.
  2. ELECTRIC, GAS AND COMMUNICATION UTILITY DESIGN FOR REMOVAL, RELOCATION AND PROVIDING NEW SERVICE SHALL BE PROVIDED BY INDIVIDUAL UTILITY COMPANIES.
  3. SEE SHEET C-504 FOR ALL SANITARY SEWER DETAILS.
  4. CONTRACTOR TO FIELD VERIFY LOCATIONS AND ELEVATIONS OF EXISTING UTILITIES PRIOR TO CONSTRUCTION.
  5. ALL EXISTING UTILITIES THAT ARE ABANDONED IN PLACE SHALL BE FILLED WITH FLOW FILL.
  6. SEE ELECTRICAL PLANS FOR THE DESIGN OF COMMUNICATIONS UTILITY SERVICES TO THE BUILDINGS.

